

CAT 專業系列 - 斷路器分析儀+定時器

簡介： CAT專業系除擁有CAT標準系列功能外。並內建可輸出高達500A並可調節輸出的直流電流，可進行靜態與動態接觸電阻量測。

應用領域：(限CAT126)

- 最多可同時測量12個主觸點（每相4個斷點）
---包括預插入觸點電阻（如果在斷路器中）和6個輔助觸點電阻
- 評估斷路器兩極之間的同步性（同時性），
- 輔助觸點正時測量
- “首次觸發”測試、動態電阻以及接觸(靜態)測量
- 線圈電流測量，同時用於6個線圈
- 測量位移，接觸擦拭，超行程，回彈，阻尼時間和平均值斷路器運動部件的速度。

主要特點

- 12個正時通道(3 x 4)，用於主觸點電阻和預插入觸點電阻
- 6個用於輔助觸點的正時通道
- 6個線圈控制和線圈電流測量通道
- 3個用於類比和數位傳感器的運動傳感器輸入
- 用於外部測量觸發(選購)
- 6個可配置的模擬通道
- 內置500A大電流低阻量測功能



CAT標準系列功能分類

型號	CAT3X	CAT6X	CAT12X
	CAT35/CAT36	CAT64A/CAT65/CAT66	CAT124A/CAT125/CAT126
主要觸點正時通道	3	6	6
輔助觸點正時通道		6	
線圈控制		有	
線圈電流測量通道		無	
模擬輸入通道		6	

傳感器輸入通道	3		
內建熱感式列表機及雙側接地	選配		
“首次觸發”量測	有		
低阻計	200A/500A	無/200A/500A	無/200A/500A
高精度模組 (選配)	有	無/有/有	無/有/有
動態電阻測量	有	無/有/有	無/有/有
振動測量	有		

技術規格

主觸點：

- 接點輸入數量：依據型號功能最多有12通道 (3 x 4)，每相4個，
- 電阻觸點
 - 閉合 $\leq 10\Omega$
 - 電阻觸點範圍 $10\Omega \sim 5k\Omega$
 - 開路 $\geq 5k\Omega$
 - 開路電壓：20V DC
 - 短路電流：50mA
- 每個通道測量預插入電阻

輔助輸入：

- 通道數：6，電氣隔離 (外部輸入可用作第三個輔助輸入)
- 用戶可選：乾或濕式
- 接觸感測器(濕式)：
 - 開路電壓：24V DC
 - 短路電流：5mA
- 電壓感測器(濕式)：
 - 工作電壓300V DC，250V AC
 - 低電壓啟動模式 $\pm 5V$
 - 高電壓啟動模式 $\pm 10V$
- 過電流和過電壓保護

線圈驅動：

- 通道數：(3個跳脫及3個閉合線圈)
- 六個獨立線圈觸發輸出
- 電子驅動器提供出色的時序控制
- 過電流和過電壓保護
- 線圈電源輸入：最大DC 300V及35A

電流量測：

- 針對跳脫及閉合線圈：6通道(霍爾感測器)
- 檔位：35A (DC \sim 5kHz)
- 精確度： $\pm(0.5\%rdg+0.1\%f.s)$
- 圖形顯示：電流波形以0.1ms分辨率顯示

類比輸入：

- 6通道-線圈電流測量
- 6電壓通道，每個通道有4個檔位 $\pm 1V$ 、 $\pm 5V$ 、 $\pm 60V$ 及 $\pm 300V$ AC/DC
- 類比通道是絕緣的

直流輸出：

- 供應電流轉換器(選購)電源

時間測量：

時間測量解析度：

- 0.1ms在2s測試過程中(10kHz取樣率下)
 - 1ms在20s測試過程中(1kHz取樣率下)
 - 10ms在200s測試過程中(100Hz取樣率下)
- 精確度： $\pm 0.05\% \text{rdg.} \pm \text{resolution}$

斷路器動作：

- Close(C)
 - Open(O)
 - Close-Open(C-O)
 - Open-Close(O-C)
 - Open-Close-Open(O-C-O)
 - First trip test
- 用戶可選擇所需的測試順序

靜態電阻測量：

- 內建500A大電流低阻計(依據型號有無)
- 電流檔位：5 A ~ 500A
- 最大負載電壓6.2V
- 電阻範圍 $0.1 \mu\Omega \sim 999.9 \text{m}\Omega$
- 電阻解析度 $0.1 \mu\Omega$
- 精確度 $\pm(0.1\% \text{rdg.} + 0.1\% \text{f. s.})$

傳感器輸入：

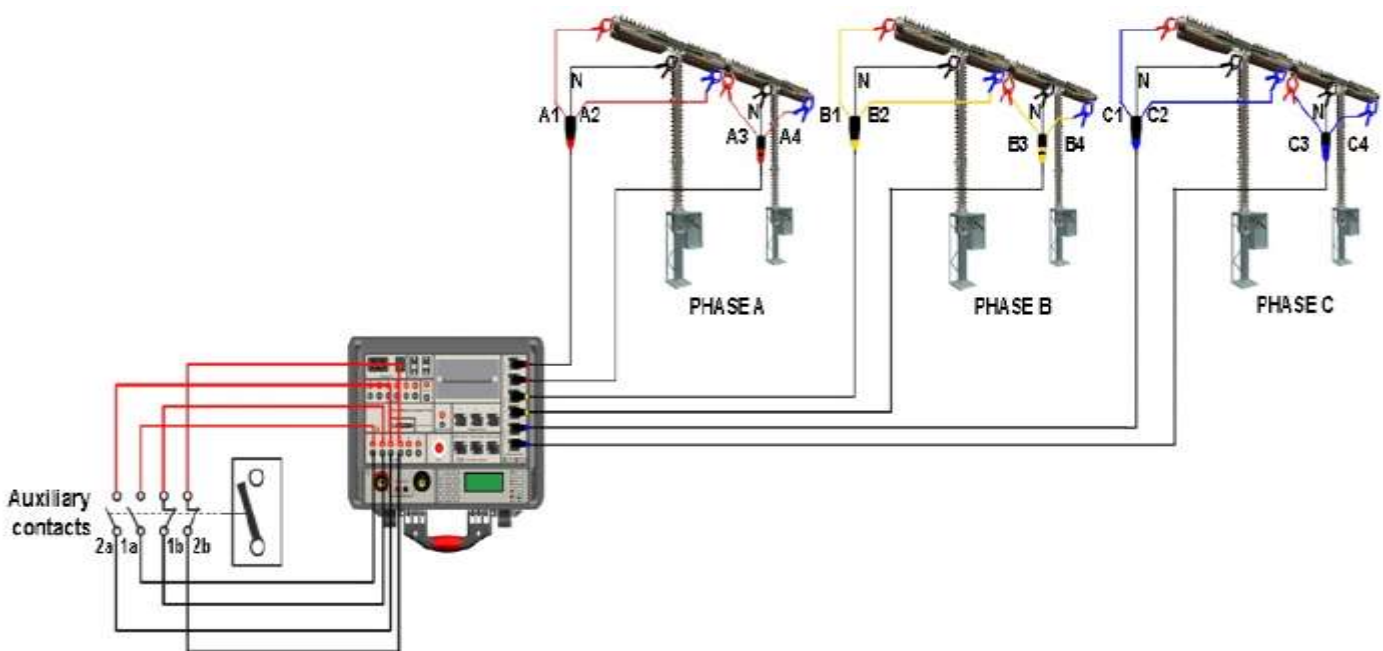
- 數位傳感器輸入通道3
- 類比傳感器輸入通道3
- 類比傳感器解析度16 bit
- 內部供應電源5V

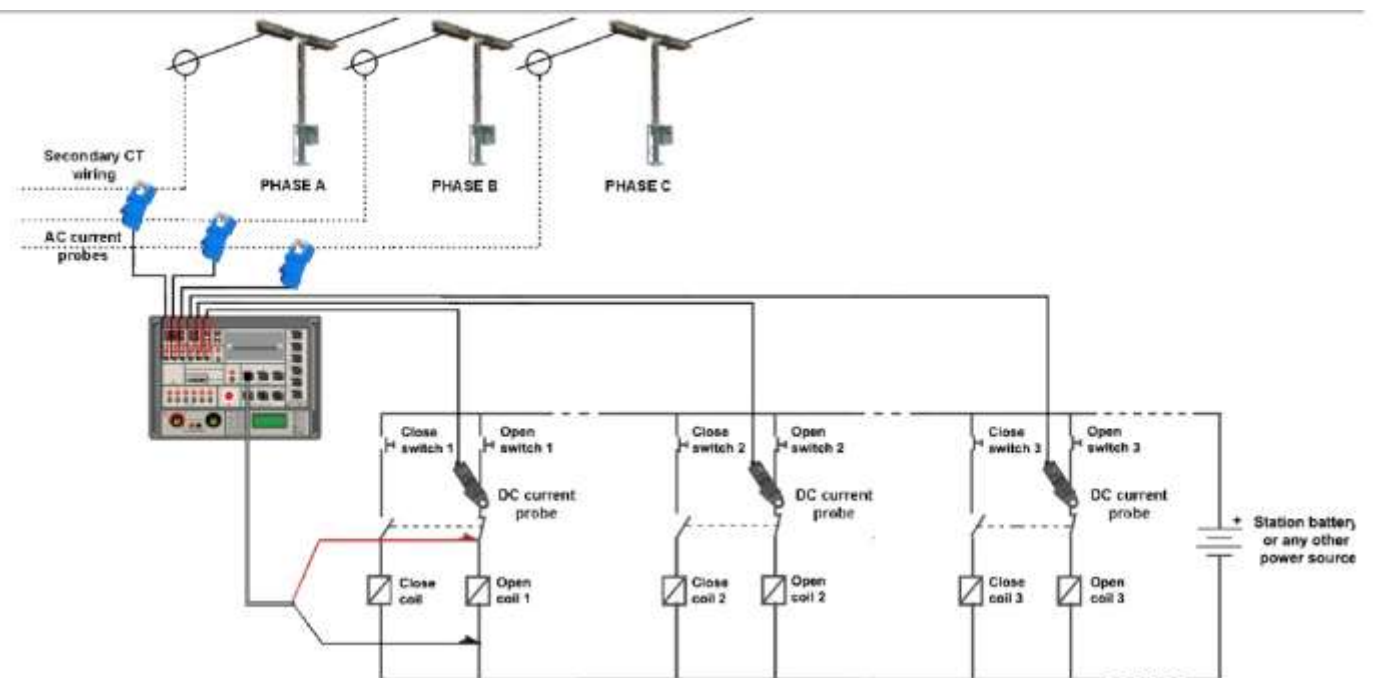
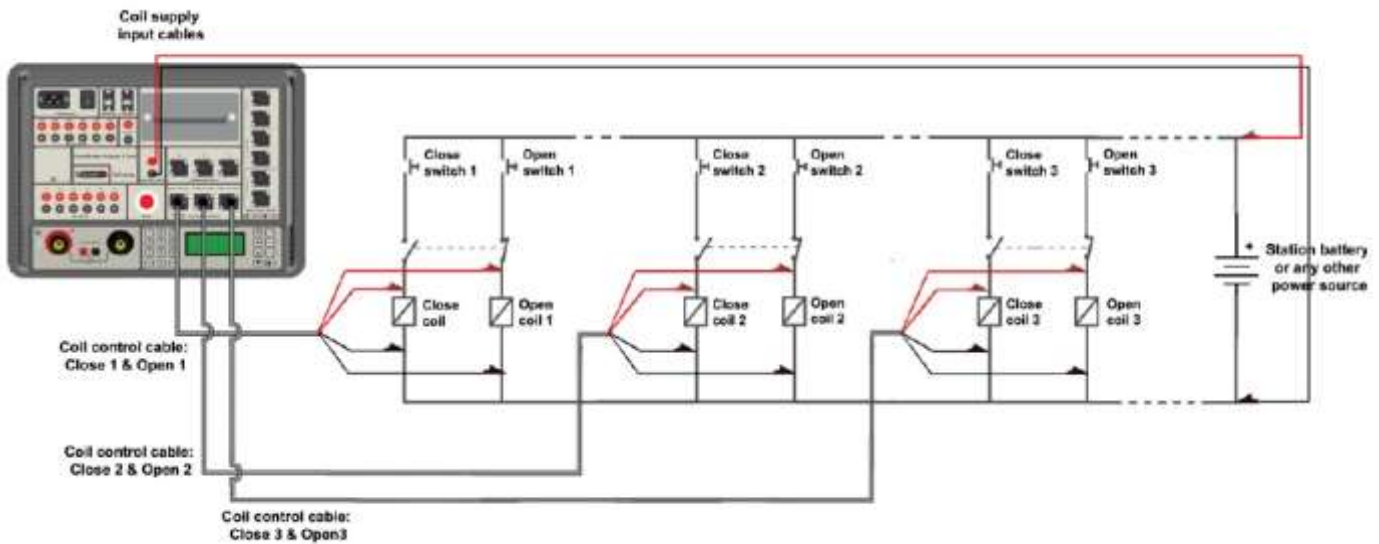
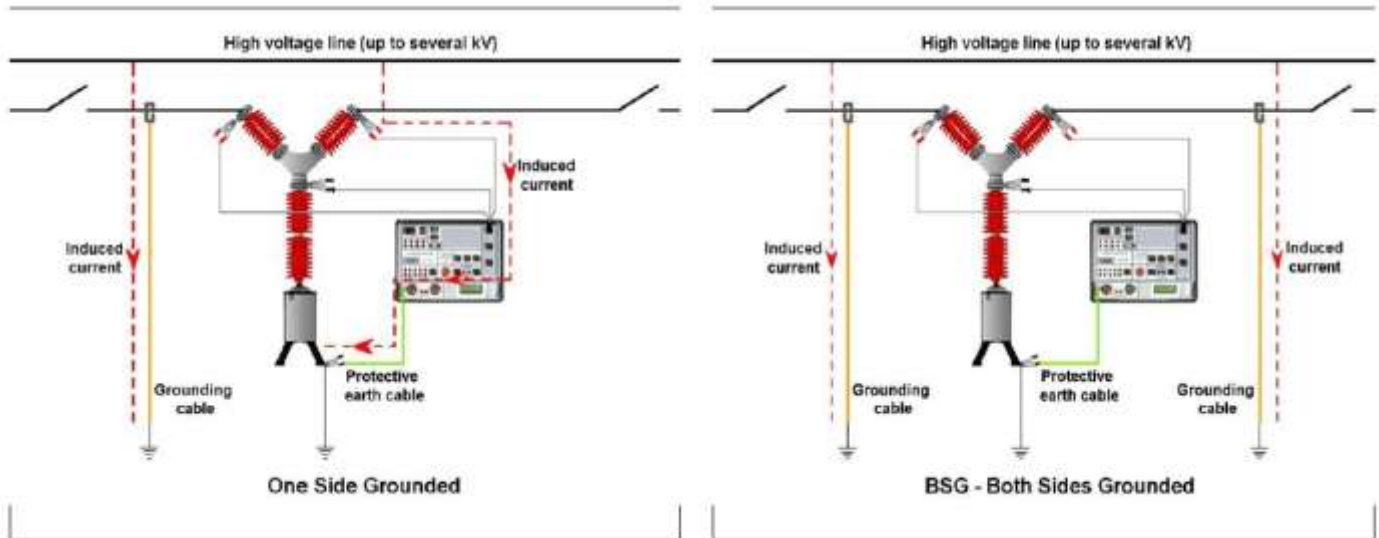
時間測量觸發：

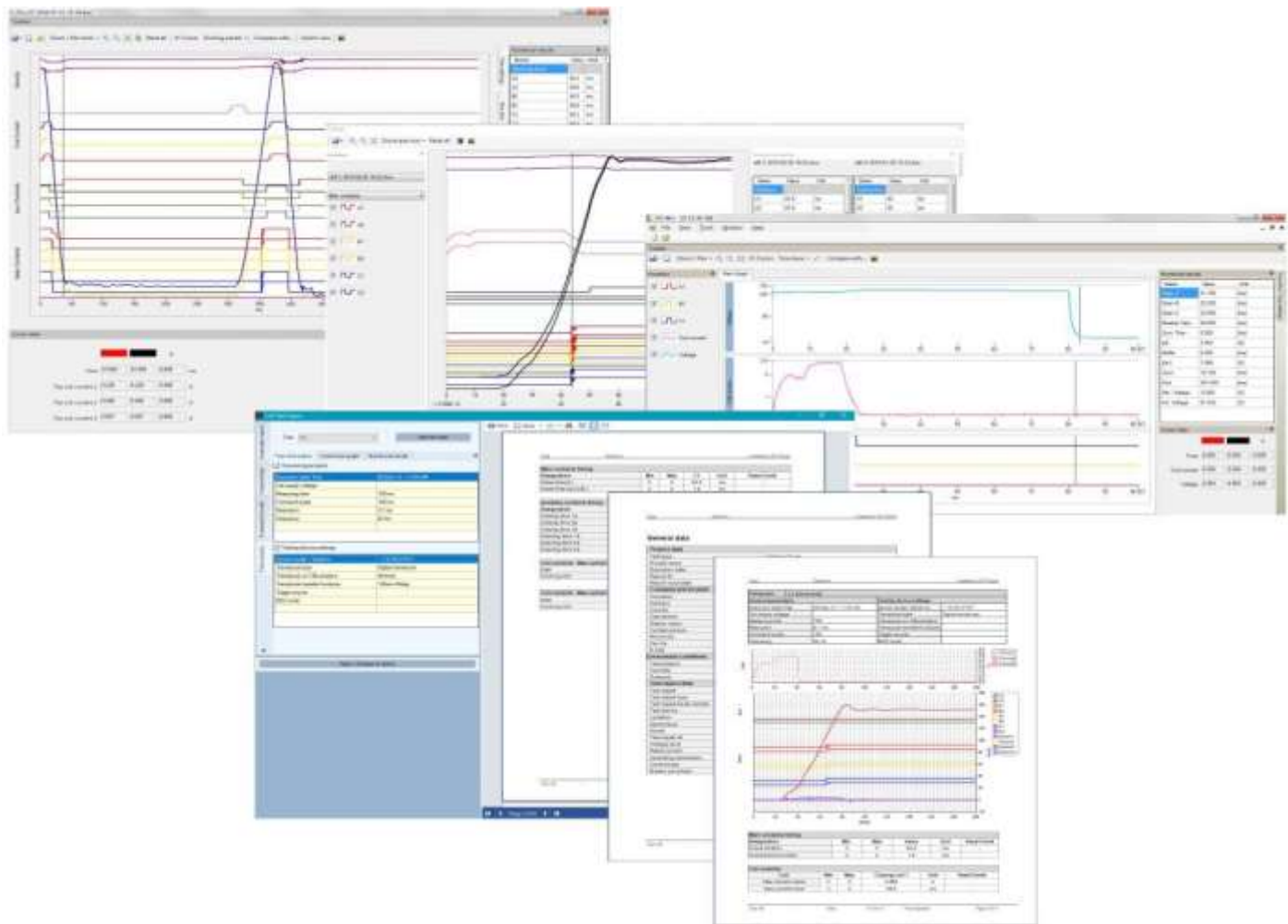
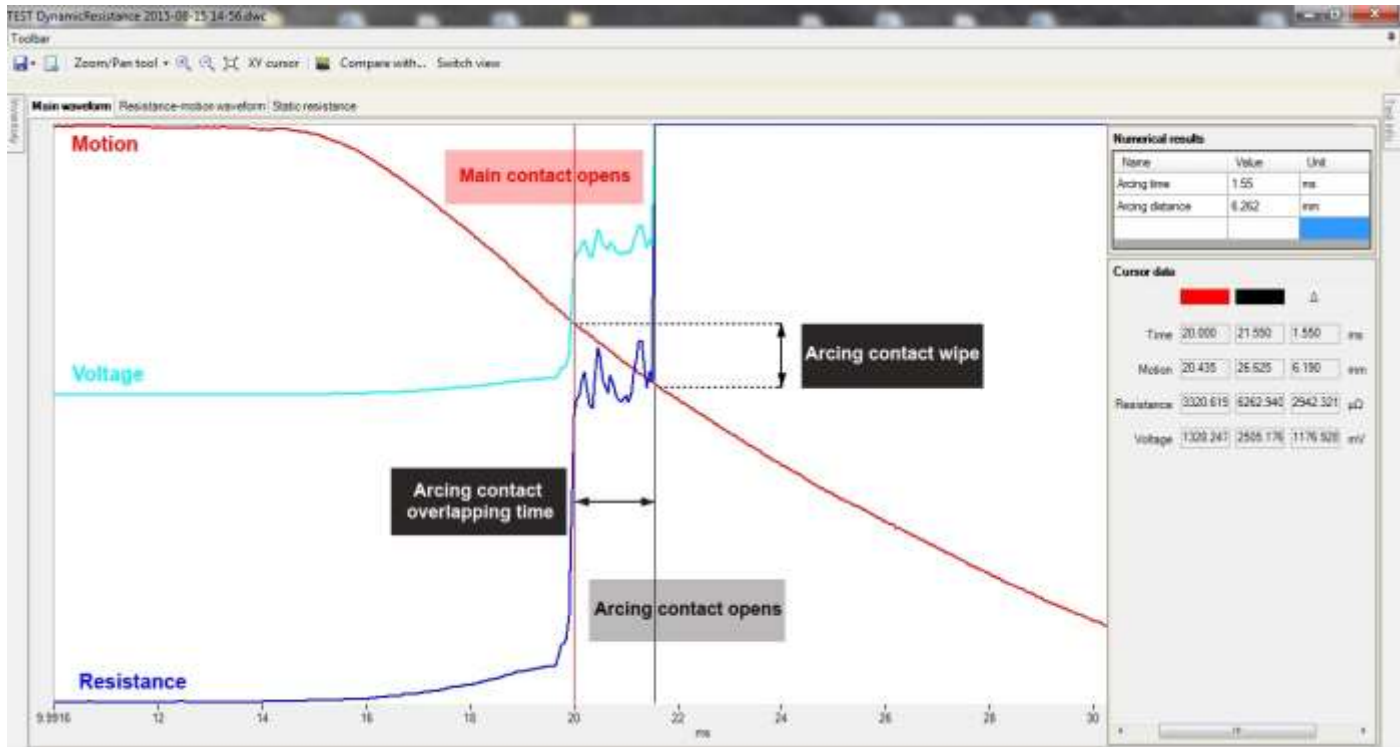
- 外部觸發2通道(觸發輸入電壓10V~300V AC/DC)
- 線圈電流：依照使用者設定上限
- 輔助輸入：觸點狀態改變
- 類比輸入：上限可由使用者設定

動態電阻測量：

- 電壓與電流測量通道
- DRM取樣率20kHz(0.05ms解析度)
- 解析度16bit
- 斷路器可用於DRM操作
 - Open (O)
 - Close (C)
 - O - C (自動合閘)
 - C - O (製造跳閘)







選購配件



Main contacts cables 5 m (16.4 ft) with SCT clamps*



Main contacts extensions cables 10 m (32.8 ft)*



Coil control cable set 5 m (16.4 ft) with banana plugs*



Auxiliary contacts cable set 5 m (16.4 ft) with banana plugs*



Coil supply cable set 2 x 5 m 2,5 mm² (16.4 ft, 13 AWG) with banana plugs



Analog channels cable set 12 x 5 m (16.4 ft) with banana plugs*



Current cables 2 x 10 m 50 mm² (32.8 ft, 0 AWG) with battery clamps



Current cables 2 x 10 m 25 mm² (32.8 ft, 3 AWG) with battery clamps



Sense cables 2 x 10 (32.8 ft) m with alligator clamps A2



Transport case



Cable bag



Cable plastic case with wheels - large size



Current DC clamp 30/300 A



AC Current clamp 1 A / 1 V with cable 5 m



Universal transducer mounting kit (extended version)



Digital rotary transducer with 5 m (16.4 ft) connection cable



Digital rotary transducer with accessories



Linear analog transducer with 5 m (16.4 ft) connection cable**



Doble transducer adapter



Online first trip test kit

訂購資訊

Instrument	Article No
Circuit Breaker Analyzer & Timer CAT35	CAT3500-N-00
Circuit Breaker Analyzer & Timer CAT36	CAT3600-N-00
Circuit Breaker Analyzer & Timer CAT64A	CAT64A0-N-00
Circuit Breaker Analyzer & Timer CAT65	CAT6500-N-00
Circuit Breaker Analyzer & Timer CAT66	CAT6600-N-00
Circuit Breaker Analyzer & Timer CAT124A	CAT124A-N-00
Circuit Breaker Analyzer & Timer CAT125	CAT1250-N-00
Circuit Breaker Analyzer & Timer CAT126	CAT1260-N-00

Included accessories
Windows based DV-Win PC software including USB cable
Mains power cable
Ground (PE) cable
Transport case

Recommended accessories	Article No
Main contact cables	
Main contact cables 5 m (16.4 ft) with SCT clamps (for CAT35, CAT36)	CM-05-34MXST
Main contact cables 5 m (16.4 ft) with SCT clamps (for CAT64A, CAT65, CAT66)	CM-05-65MXST
Main contact cables 5 m (16.4 ft) with SCT clamps (for CAT124A, CAT125, CAT126)	CM-05-12MXST
Main contact cables extension	
Main contact cables extension 10 m (32.8 ft) (for CAT35, CAT36, CAT64A, CAT65, CAT66)	E3-10-65MXFX
Main contact cables extension 10 m (32.8 ft) (for CAT124A, CAT125, CAT126)	E6-10-12MXFX
Control cabinet cables	
Coil control cable set 5 m (16.4 ft) with banana plugs (Single-pole control -6 coil channels)	CO-05-6BC5B1
Coil supply cable set 2 x 5 m 2,5 mm ² (16.4 ft, 13 AWG) with banana plugs	C2-05-02BPBP
Auxiliary contacts cable set 12 x 5 m (16.4 ft) with banana plugs	AX-05-02BPBP
Analog channels cable set 12 x 5 m (16.4 ft) with banana plugs	AN-05-02BPBP
Current cables 2 x 10 m 50 mm ² (32.8 ft, 0 AWG) with battery clamps (for CAT36, CAT66 and CAT126)	C2-10-50VMB3
Current cables 2 x 10 m 25 mm ² (32.8 ft, 3 AWG) with battery clamps (for CAT35, CAT65 and CAT125)	C2-10-25LMB1
Sense cables	

Optional accessories	Article No
BSG feature for CAT35 and CAT36 (one break per phase)	BSG-CATII-00
BSG feature for CAT6x and CAT12x II series (two breaks per phase)	BSG-CATII-01
Built-in high precision measurement module (available with CAT36)	RMO-HPMM-DG0
Current clamp 30/300 A power supplied from the instrument with adapter 5 m (16.4 ft)	CACL-0300-07
Current clamp 30/300 A with internal battery supply and extension 5 m (16.4 ft)	CACL-0300-08
Thermal printer 112 mm (4.4 inch) (built-in)	PRINT-112-00
Thermal paper roll	PRINT-112-RO
Cable plastic case with wheels - large size	CABLE-CAS-W3
Coil control cable set 10 m with banana plugs (Single-pole control -6 coil channels)	CO-10-6BC5B1
Coil control cable set 15 m with banana plugs (Single-pole control -6 coil channels)	CO-15-6BC5B1
Coil control cable 5 m with banana plugs (Three-pole control - 2 coil channels)	CO-05-00C5B1
Coil control cable 10 m with banana plugs (Three-pole control - 2 coil channels)	CO-10-00C5B1
Coil control cable 15 m with banana plugs (Three-pole control - 2 coil channels)	CO-15-00C5B1
Auxiliary contacts cable set 12 x 5 m with banana plugs	AX-05-02BPBP
Auxiliary contacts cable set 12 x 10 m with banana plugs	AX-10-02BPBP
Auxiliary contacts cable set 12 x 15 m with banana plugs	AX-15-02BPBP
Analog channels cable set 12 x 5 m with banana plugs	AN-05-02BPBP
Analog channels cable set 12 x 10 m with banana plugs	AN-10-02BPBP
Analog channels cable set 12 x 15 m with banana plugs	AN-15-02BPBP

Main contact cables	
Main contact cables 3 m (9.8 ft) with SCT clamps (for CAT35, CAT36)	CM-03-34MXST
Main contact cables 3 m (9.8 ft) with SCT clamps (for CAT64A, CAT65, CAT66)	CM-03-65MXST
Main contact cables 3 m (9.8 ft) with SCT clamps (for CAT124A, CAT125, CAT126)	CM-03-12MXST
Main contact cables 3 m (9.8 ft) with alligator clamps (for CAT35, CAT36)	CM-03-34MXA2
Main contact cables 5 m (16.4 ft) with alligator clamps (for CAT35, CAT36)	CM-05-34MXA2
Main contact cables 3 m (9.8 ft) with alligator clamps (for CAT64A, CAT65, CAT66)	CM-03-65MXA2
Main contact cables 5 m (16.4 ft) with alligator clamps (for CAT64A, CAT65, CAT66)	CM-05-65MXA2
Main contact cables 3 m (9.8 ft) with alligator clamps (for CAT124A, CAT125, CAT126)	CM-03-12MXA2
Main contact cables 5 m (16.4 ft) with alligator clamps (for CAT124A, CAT125, CAT126)	CM-05-12MXA2

Main contact cables extension	
Main contact cables Extension 5 m (16.4 ft) (for CAT35, CAT36, CAT64A, CAT65, CAT66)	E3-05-65MXFX
Main contact cables Extension 5 m (16.4 ft) (for CAT124A, CAT125, CAT126)	E6-05-12MXFX
Main contact cables Extension 15 m (49.2 ft) (for CAT35, CAT64A, CAT65, CAT66)	E3-15-65MXFX
Main contact cables Extension 15 m (49.2 ft) (for CAT124A, CAT125, CAT126)	E6-15-12MXFX
Current cables	
Current cables 2 x 5 m 50 mm ² (32.8 ft, 0 AWG) with battery clamps (for CAT36, CAT66 and CAT126)	C2-05-50VMB3
Current cables 2 x 15 m 70 mm ² (49.2 ft, 00 AWG) with battery clamps (for CAT36, CAT66 and CAT126)	C2-15-70VMB3
Current cables 2 x 5 m 25 mm ² (32.8 ft, 3 AWG) with battery clamps (for CAT35, CAT65 and CAT125)	C2-05-25LMB1
Current cables 2 x 15 m 35 mm ² (49.2 ft, 2 AWG) with battery clamps (for CAT35, CAT65 and CAT125)	C2-15-35LMB1
Sense cables	
Sense cables 2 x 5 m (32.8 ft) with alligator clamps (for CAT35, CAT36, CAT65, CAT66, CAT125 and CAT126)	S2-05-02BPA1
Sense cables 2 x 15 m (49.2 ft) with alligator clamps (for CAT35, CAT36, CAT65, CAT66, CAT125 and CAT126)	S2-15-02BPA1
Transducers	
Digital rotary transducer with 5 m (16.4 ft) connection cable	DRT-250-C605
Digital rotary transducer with 10 m (32.8 ft) connection cable	DRT-250-C610
Digital rotary transducer with 5 m (16.4 ft) connection cable with accessories	DRT-SET-0005
Digital rotary transducer with 10 m (32.8 ft) connection cable with accessories	DRT-SET-0010
Linear analog transducer 150 mm (5.9 in) with 5 m (16.4 ft) connection cable	LAT-150-C305
Linear analog transducer 225 mm (8.85 in) with 5 m (16.4 ft) connection cable	LAT-225-C305
Linear analog transducer 300 mm (11.8 in) with 5 m (16.4 ft) connection cable	LAT-300-C305
Linear analog transducer 500 mm (19.68 in) with 5 m (16.4 ft) connection cable	LAT-500-C305
Current clamp 30/300 A power supplied from the instrument with adapter 5 m	CACL-0300-07
AC Current clamp 1 A / 1 V and cable 5 m with banana plugs	CACL-ACBP-05
Online first trip test kit for CAT Advanced series	ONFTT-KIT-00
Transducer mounting kits	
Universal transducer mounting kit	UTM-KIT-0000
Universal transducer mounting kit - extended version	UTM-KIT-0001
Doble transducer adapter	DTA-BOX-C002
Linear to rotary convertor	LTR-CON-0000